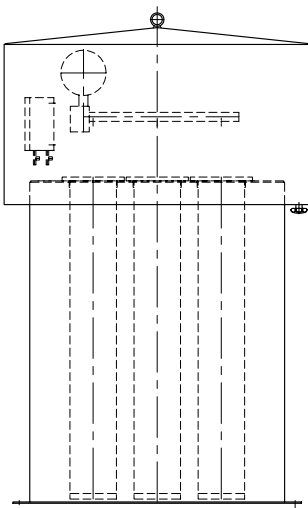


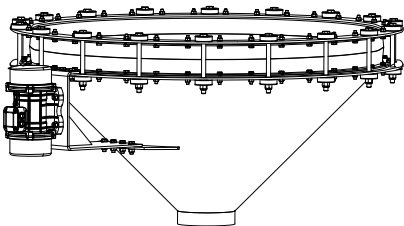
SILO ACCESSORIES
 FILTER TECHNOLOGY
 DISCHARGE TECHNOLOGY

Material:	For items without material data, all parts are made of AlMg3, AlMgSi or Stainless Steel.
Standard accessories:	Accessories always include plant installation by P+W.

Design example



Design example



Description	Article no.	Article no.	Article no.
Filter technology			
<p>We can supply you with high-performance and cutting edge dust removers and filters for any and all of your needs. Serial production of the individual components and the modular design offered by our suppliers enable us to supply you with customised solutions for industrial dust separation. In addition to this, we also give you measures to prevent dust explosions.</p> <p>There are filter models for every application: cartridge filters, bag filters or tube filters as silo bin-top filters or stand filters. The filters can be supplied in the materials "AlMg" or "Stainless Steel". Please inform us about the material execution!</p> <p>To control the dust separator / filter, the filter control is used. Here you have a choice of either an interval control unit or a differential pressure switch. The interval control unit can be supplied by the factory with an input voltage of 110/230V, 50Hz and the solenoid valve voltage of 24V,DC as well as in the Protection Class IP66, Nema 4.</p> <p>The filters and dust separators can also be delivered for the ATEX Zones 20/21/22 with a pressure impulse stability $P_{red} = 1.0 \text{ bar}$ (2.0 bar absolute) upon request.</p>			
FIL 20	Filter area 20m ²	FIL 20AL	FIL 20CR
FIL 22	Filter area 22m ²	FIL 22AL	FIL 22CR
FIL 24	Filter area 24m ²	FIL 24AL	FIL 24CR
FIL 31	Filter area 31m ²	FIL 31AL	FIL 31CR
Vibration discharge device/vibration hopper			
<p>The vibration discharge devices/vibration hoppers are available for non-free-flowing bulk materials for every industrial sector. The hopper or the discharge device is hung up at several points in the silo discharge area. It is sealed with a sleeve so that it is dustproof. For this, the discharge base must be decoupled from the silo. The vibrating device is made to vibrate horizontally by one/several unbalance motors. These vibrations are then transferred to the product columns in the silo cone. The material loosened in this way can be discharged from the silo.</p> <p>The vibration discharge device/vibration hopper is supplied in the materials: "normal steel with epoxy resin coating" or "Stainless Steel". It also comes with a sealing cover, suspensions, retaining flange and unbalance motor. Please inform us about the material execution!</p> <p>The discharge devices can also be delivered for the ATEX Zones 20/21/22 with a pressure impulse stability resistance $P_{red} = 1.0 \text{ bar}$ (2.0 bar absolute) upon request.</p>			
VIBRO. SCHWING.01	Connection size DN 900	VIBRO. SCHWING.01	VIBRO. SCHWING.01CR
VIBRO. SCHWING.02	Connection size DN1200	VIBRO. SCHWING.02	VIBRO. SCHWING.02CR
VIBRO. SCHWING.03	Connection size DN1500	VIBRO. SCHWING.03	VIBRO. SCHWING.03CR
VIBRO. SCHWING.04	Connection size DN1800	VIBRO. SCHWING.04	VIBRO. SCHWING.04CR
VIBRO. SCHWING.05	Connection size DN2100	VIBRO. SCHWING.05	VIBRO. SCHWING.05CR
All measurements in mm.			